

FLOOR PLAN - LOWER GROUND
1/8" = 1'-0"



ARCHITECT:

SAFDIE RABINES ARCHITECTS
925 Fort Stockton Drive, San Diego, California 92103-1817
p. 619.297.6153 f. 619.299.6072 www.safdie-rabines.com

777 BEECH STREET

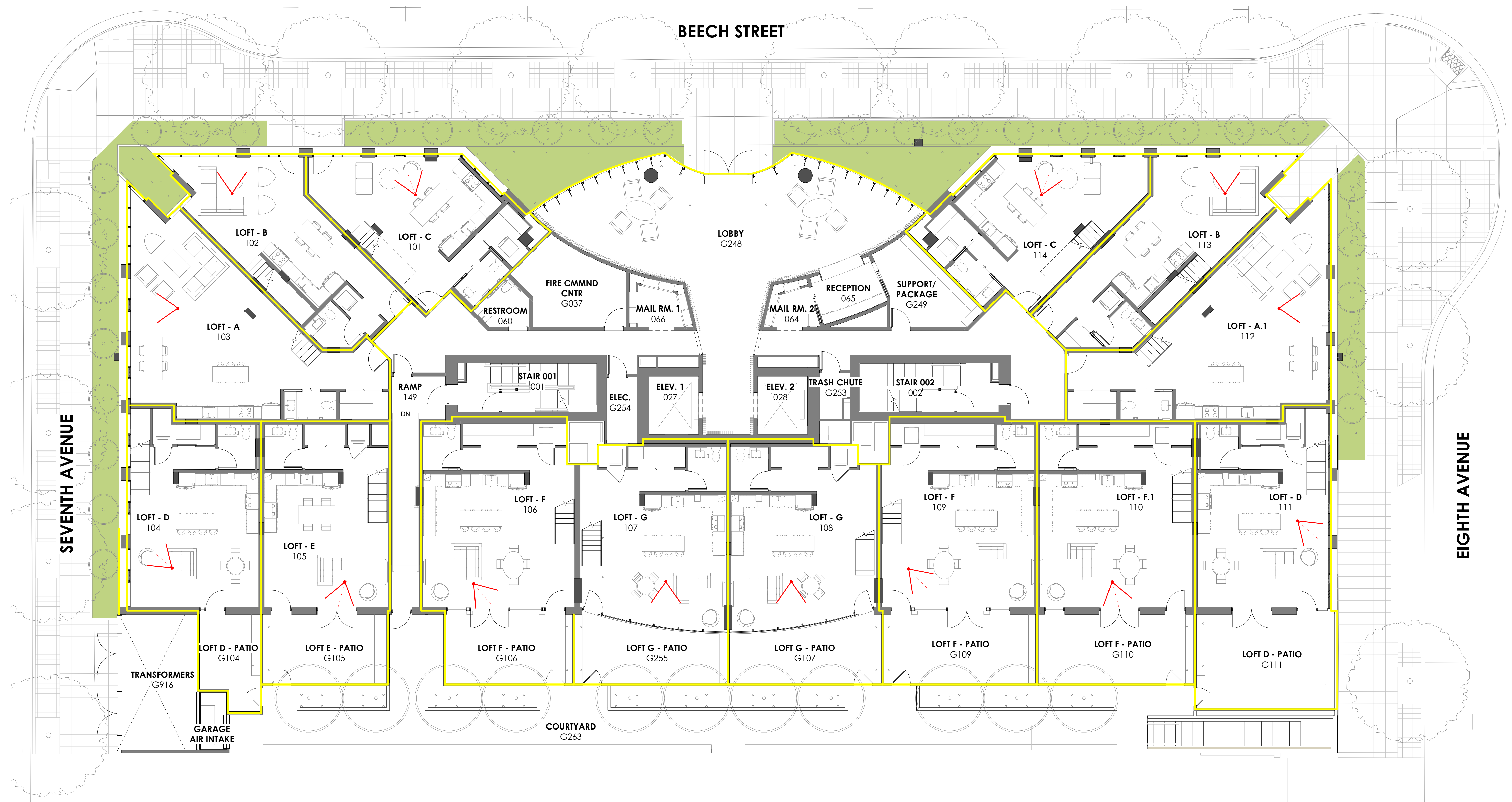
ISSUE DATE: 01 / 17 / 2022

LEGEND

VIEW ANGLE AND DIRECTION

OWNER / DEVELOPER:

JSD 2, LLC
PO Box 1467, Rancho Santa Fe, CA 92067
p. 858.880.7505



FLOOR PLAN - LEVEL 01
1/8" = 1'-0"



ARCHITECT:

SAFDIE RABINES ARCHITECTS
925 Fort Stockton Drive, San Diego, California 92103-1817
p. 619.297.6153 f. 619.299.6072 www.safdie.com

777 BEECH STREET

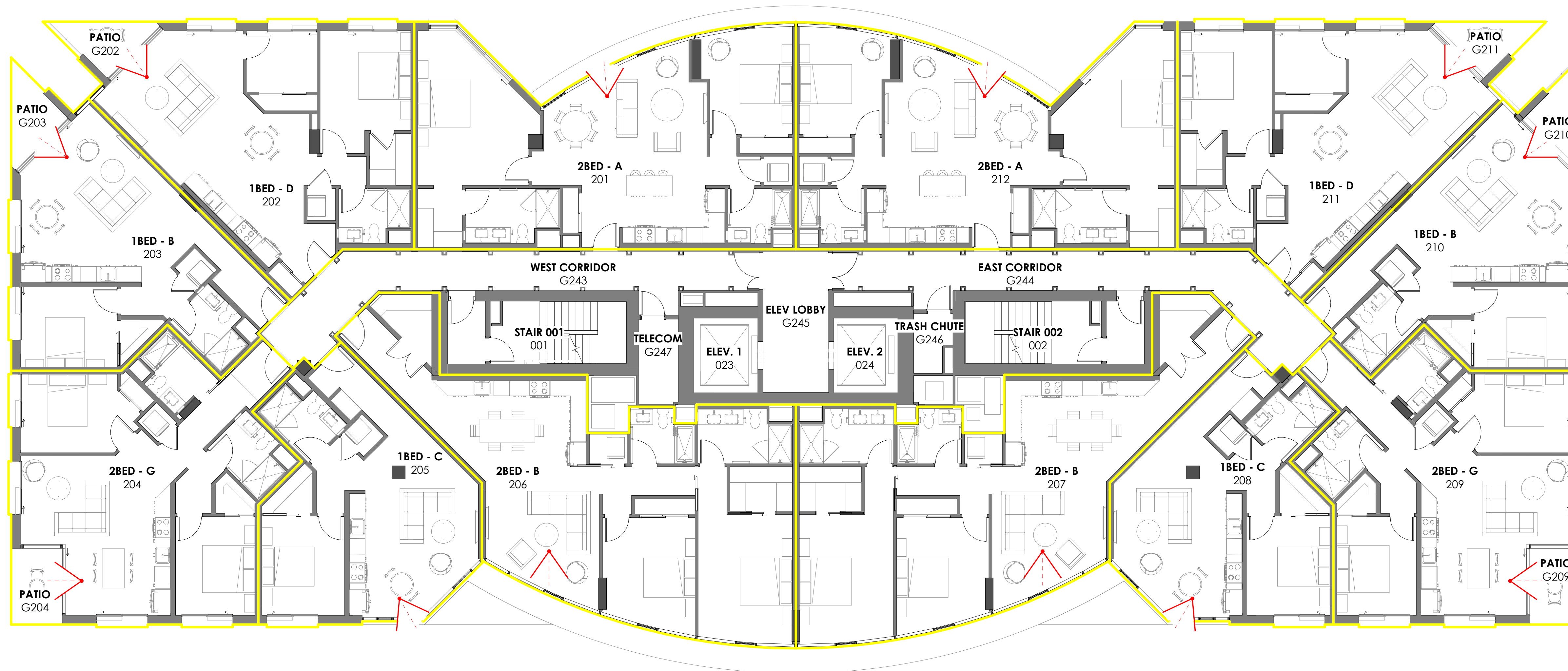
ISSUE DATE: 01 / 17 / 2022

LEGEND

 VIEW ANGLE AND DIRECTION

OWNER / DEVELOPER:

JSD 2, LLC
PO Box 1467, Rancho Santa Fe, CA 92067
p. 858.880.7505



FLOOR PLAN - LEVEL 02
1/8" = 1'-0"



ARCHITECT:

SAFDIE RABINES ARCHITECTS
925 Fort Stockton Drive, San Diego, California 92103-1817
p. 619.297.6153 f. 619.299.6072 www.safdie.com

777 BEECH STREET

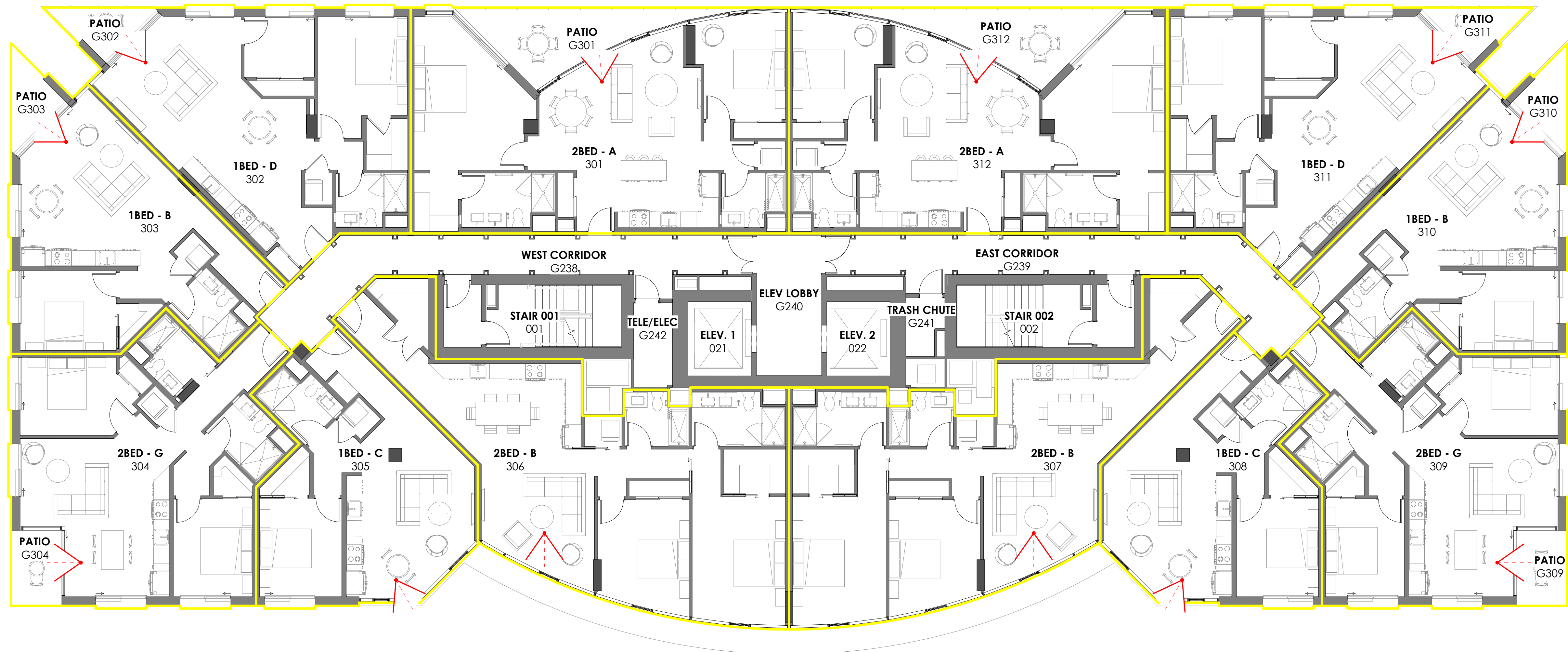
ISSUE DATE: 01 / 17 / 2022

LEGEND

 VIEW ANGLE AND DIRECTION

OWNER / DEVELOPER:

JSD 2, LLC
PO Box 1467, Rancho Santa Fe, CA 92067
p. 858.880.7505



FLOOR PLAN - LEVEL 03
1/8" = 1'-0"



ARCHITECT:

SAFDIE RABINES ARCHITECTS
925 Fort Stockton Drive, San Diego, California 92103-1817
p. 619.297.6153 f. 619.299.6072 www.safdie.com

777 BEECH STREET

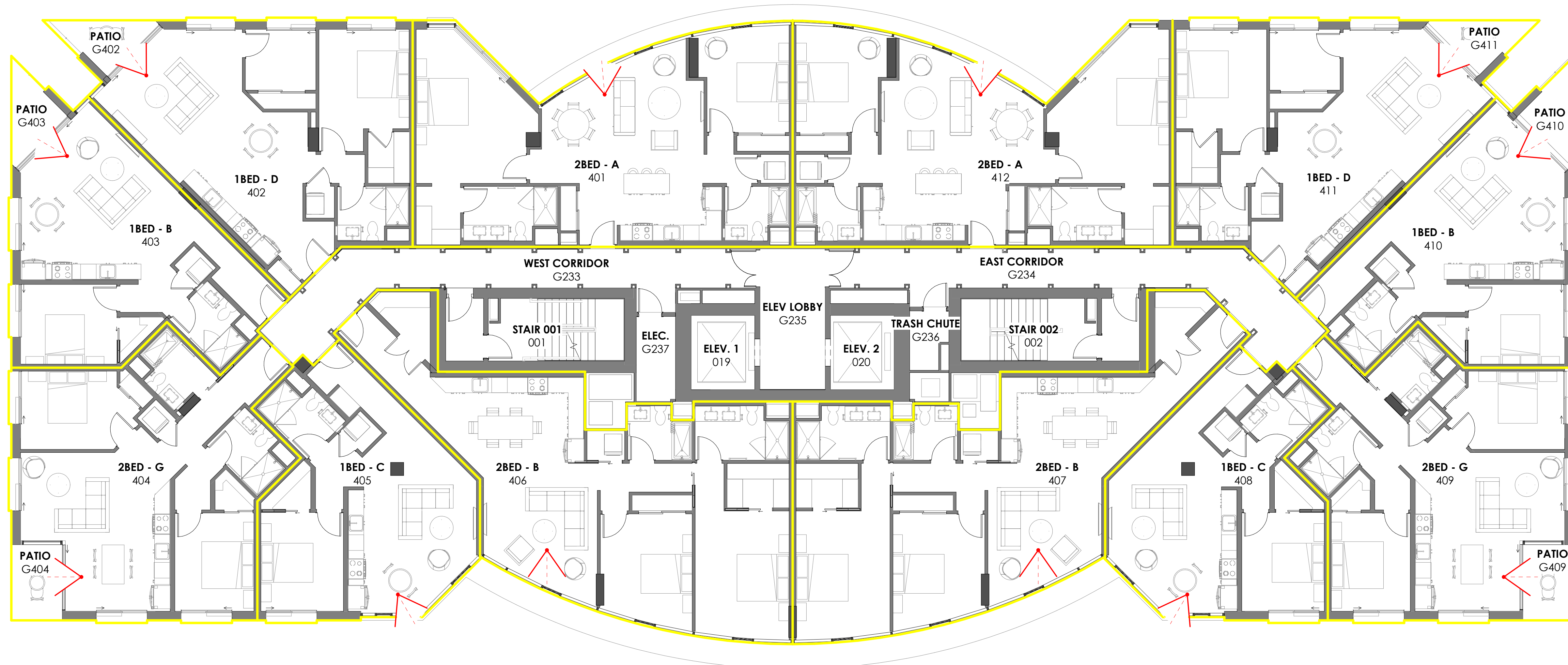
ISSUE DATE: 01 / 17 / 2022

LEGEND

 VIEW ANGLE AND DIRECTION

OWNER / DEVELOPER:

JSD 2, LLC
PO Box 1467, Rancho Santa Fe, CA 92067
p. 858.880.7505



FLOOR PLAN - LEVEL 04
1/8" = 1'-0"



ARCHITECT:

SAFDIE RABINES ARCHITECTS
925 Fort Stockton Drive, San Diego, California 92103-1817
p. 619.297.6153 f. 619.299.6072 www.safdie.com

777 BEECH STREET

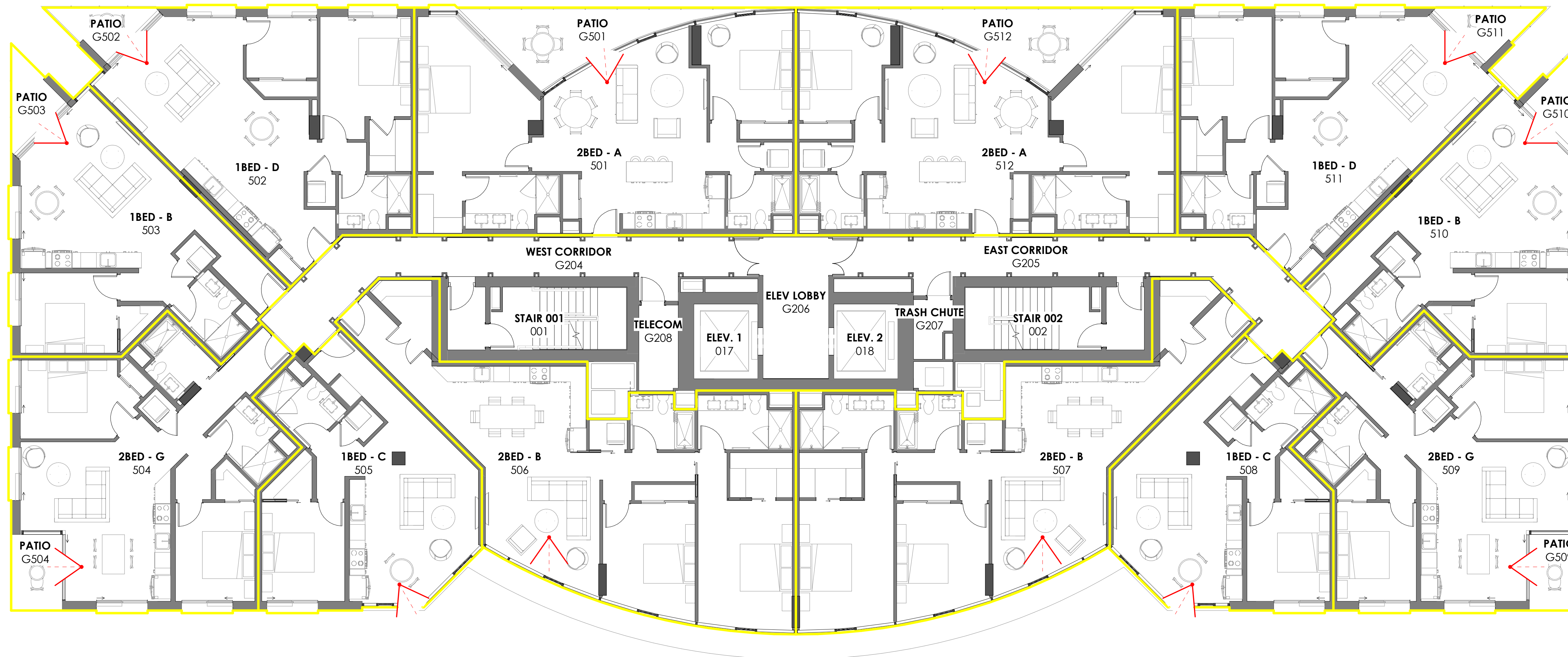
ISSUE DATE: 01 / 17 / 2022

LEGEND

 VIEW ANGLE AND DIRECTION

OWNER / DEVELOPER:

JSD 2, LLC
PO Box 1467, Rancho Santa Fe, CA 92067
p. 858.880.7505



FLOOR PLAN - LEVEL 05
1/8" = 1'-0"



ARCHITECT:

SAFDIE RABINES ARCHITECTS
925 Fort Stockton Drive, San Diego, California 92103-1817
p. 619.297.6153 f. 619.299.6072 www.safdie.com

777 BEECH STREET

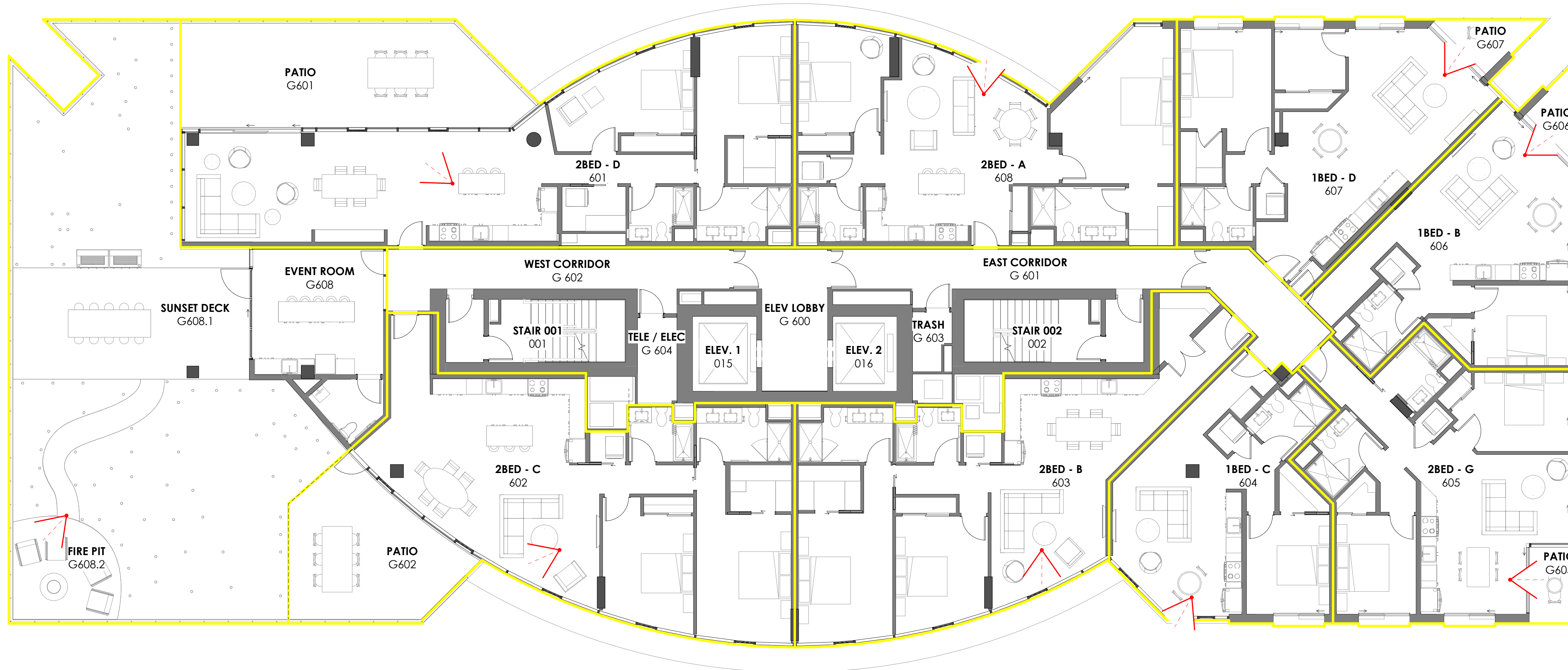
ISSUE DATE: 01 / 17 / 2022

LEGEND

VIEW ANGLE AND DIRECTION

OWNER / DEVELOPER:

JSD 2, LLC
PO Box 1467, Rancho Santa Fe, CA 92067
p. 858.880.7505



FLOOR PLAN - LEVEL 06
1/8" = 1'-0"



ARCHITECT:

SAFDIE RABINES ARCHITECTS
925 Fort Stockton Drive, San Diego, California 92103-1817
p. 619.297.6153 f. 619.299.6072 www.safdie.com

777 BEECH STREET

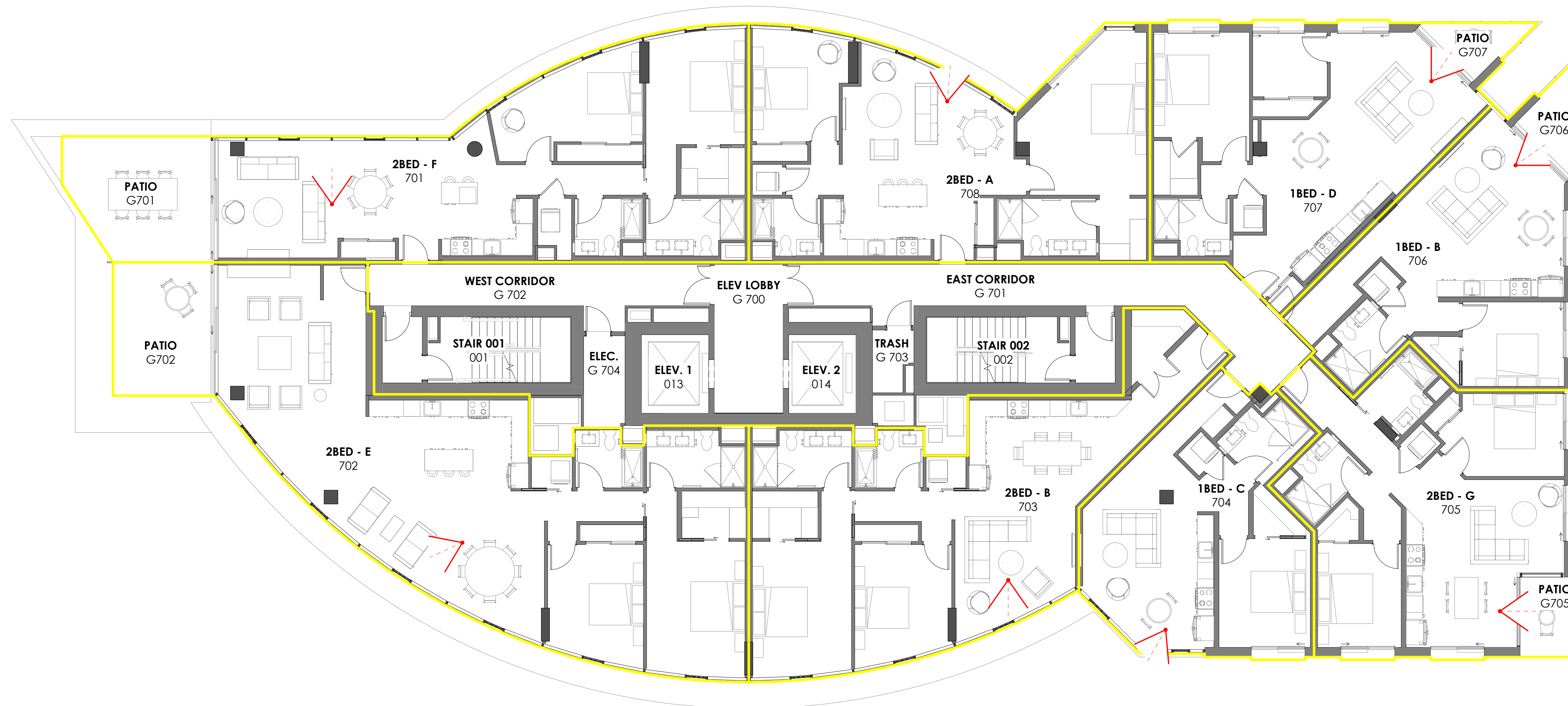
ISSUE DATE: 01 / 17 / 2022

LEGEND

 VIEW ANGLE AND DIRECTION

OWNER / DEVELOPER:

JSD 2, LLC
PO Box 1467, Rancho Santa Fe, CA 92067
p. 858.880.7505



FLOOR PLAN - LEVEL 07
1/8" = 1'-0"



ARCHITECT:

SAFDIE RABINES ARCHITECTS
925 Fort Stockton Drive, San Diego, California 92103-1817
p. 619.297.6153 f. 619.299.6072 www.safdie.com

777 BEECH STREET

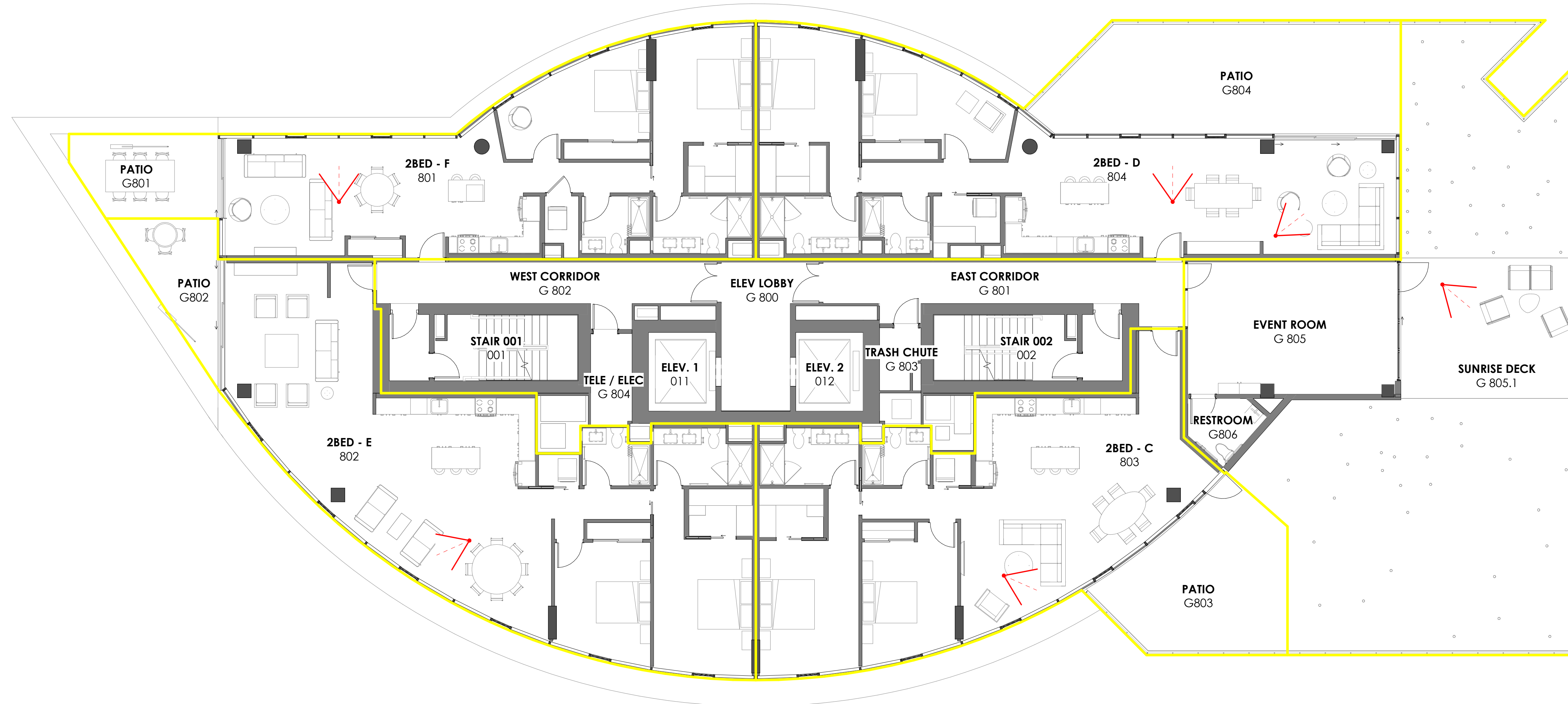
ISSUE DATE: 01 / 17 / 2022

LEGEND

 VIEW ANGLE AND DIRECTION

OWNER / DEVELOPER:

JSD 2, LLC
PO Box 1467, Rancho Santa Fe, CA 92067
p. 858.880.7505



FLOOR PLAN - LEVEL 08
1/8" = 1'-0"



ARCHITECT:

SAFDIE RABINES ARCHITECTS
925 Fort Stockton Drive, San Diego, California 92103-1817
p. 619.297.6153 f. 619.299.6072 www.safdie.com

777 BEECH STREET

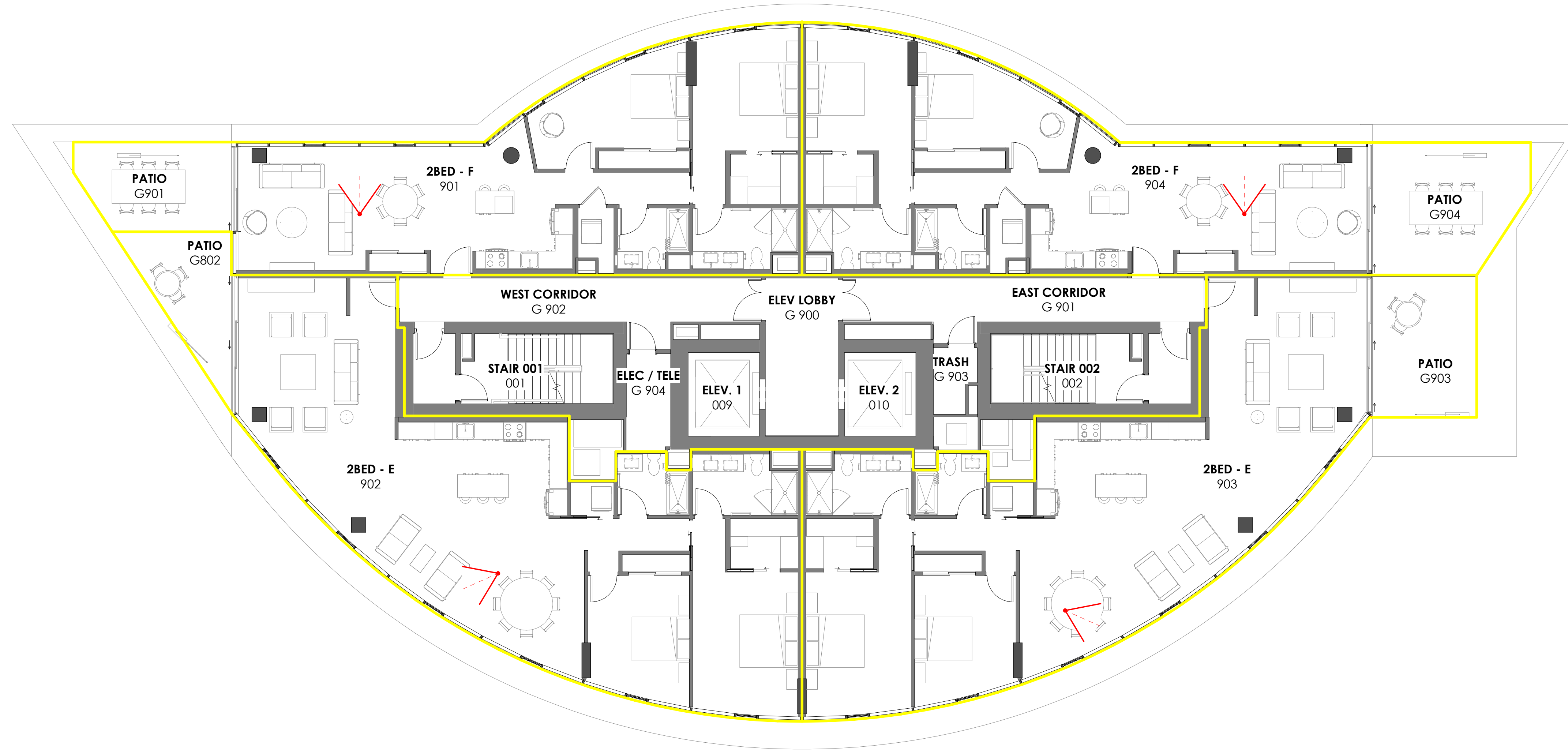
ISSUE DATE: 01 / 17 / 2022

LEGEND

 VIEW ANGLE AND DIRECTION

OWNER / DEVELOPER:

JSD 2, LLC
PO Box 1467, Rancho Santa Fe, CA 92067
p. 858.880.7505



FLOOR PLAN - LEVEL 09
1/8" = 1'-0"



ARCHITECT:

SAFDIE RABINES ARCHITECTS
925 Fort Stockton Drive, San Diego, California 92103-1817
p. 619.297.6153 f. 619.299.6072 www.safdie-rabines.com

777 BEECH STREET

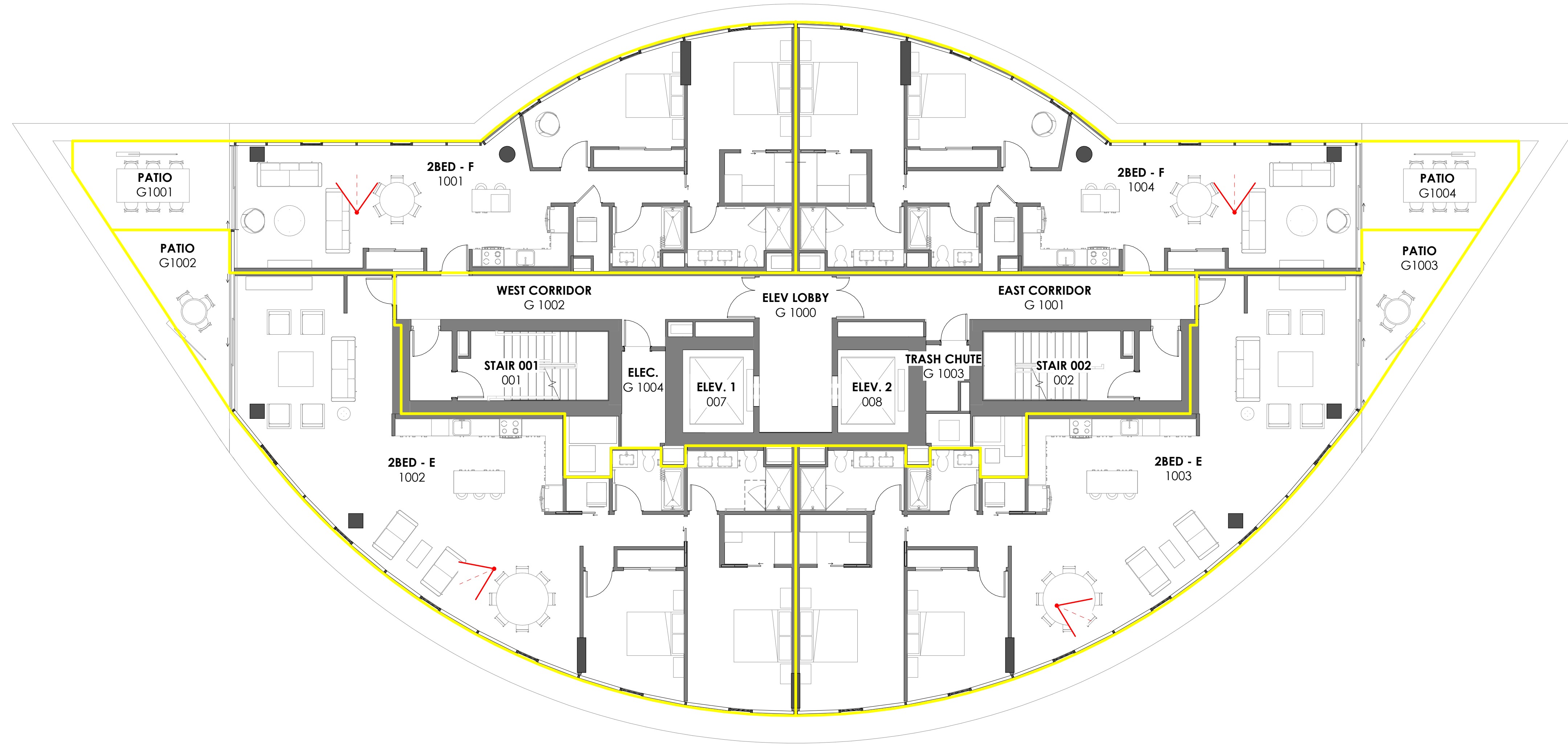
ISSUE DATE: 01 / 17 / 2022

LEGEND

 VIEW ANGLE AND DIRECTION

OWNER / DEVELOPER:

JSD 2, LLC
PO Box 1467, Rancho Santa Fe, CA 92067
p. 858.880.7505



FLOOR PLAN - LEVEL 10
1/8" = 1'-0"



ARCHITECT:

SAFDIE RABINES ARCHITECTS
925 Fort Stockton Drive, San Diego, California 92103-1817
p. 619.297.6153 f. 619.299.6072 www.safdie.com

777 BEECH STREET

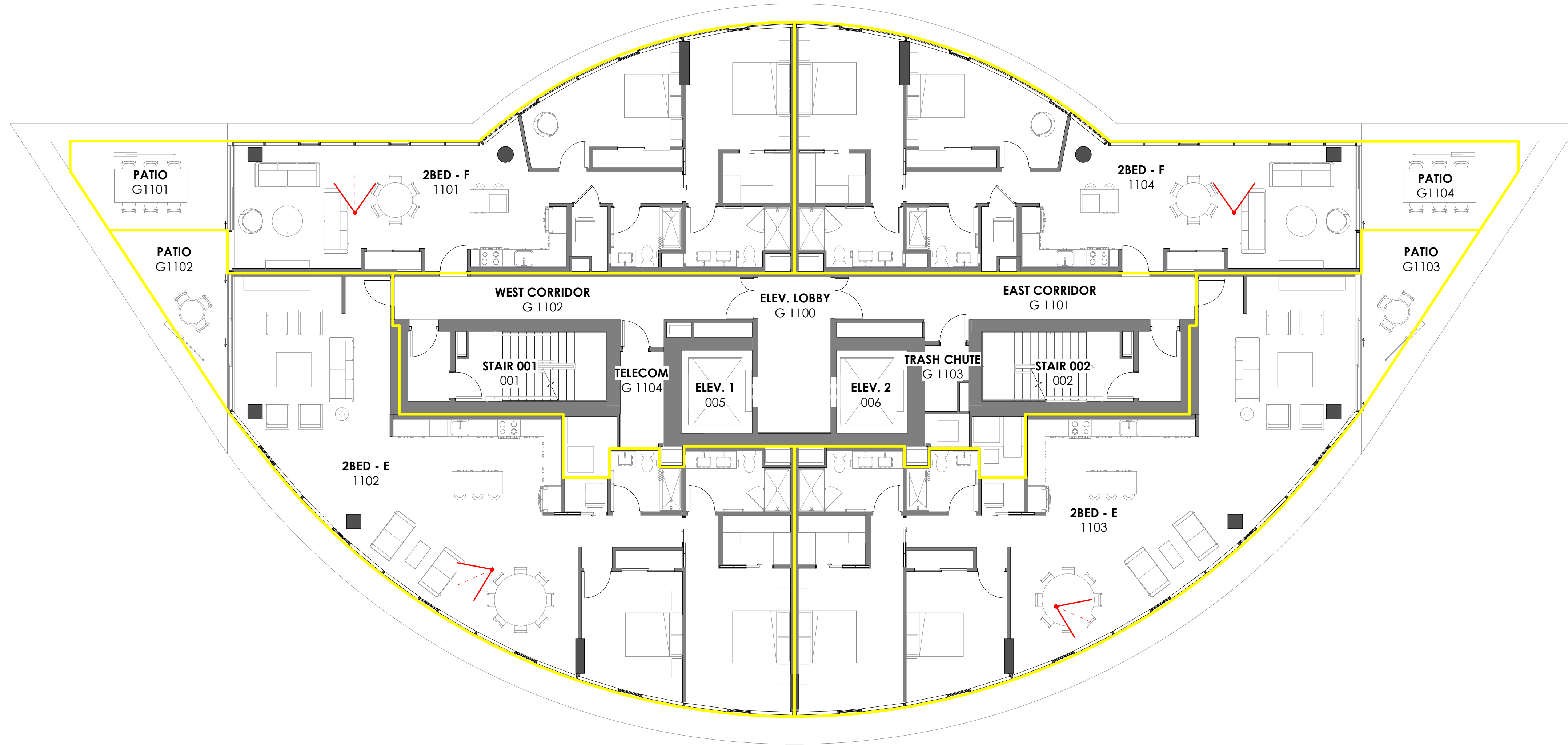
ISSUE DATE: 01 / 17 / 2022

LEGEND

 VIEW ANGLE AND DIRECTION

OWNER / DEVELOPER:

JSD 2, LLC
PO Box 1467, Rancho Santa Fe, CA 92067
p. 858.880.7505



FLOOR PLAN - LEVEL 11
1/8" = 1'-0"



ARCHITECT:

SAFDIE RABINES ARCHITECTS
925 Fort Stockton Drive, San Diego, California 92103-1817
p. 619.297.6153 f. 619.299.6072 www.safdie.com

777 BEECH STREET

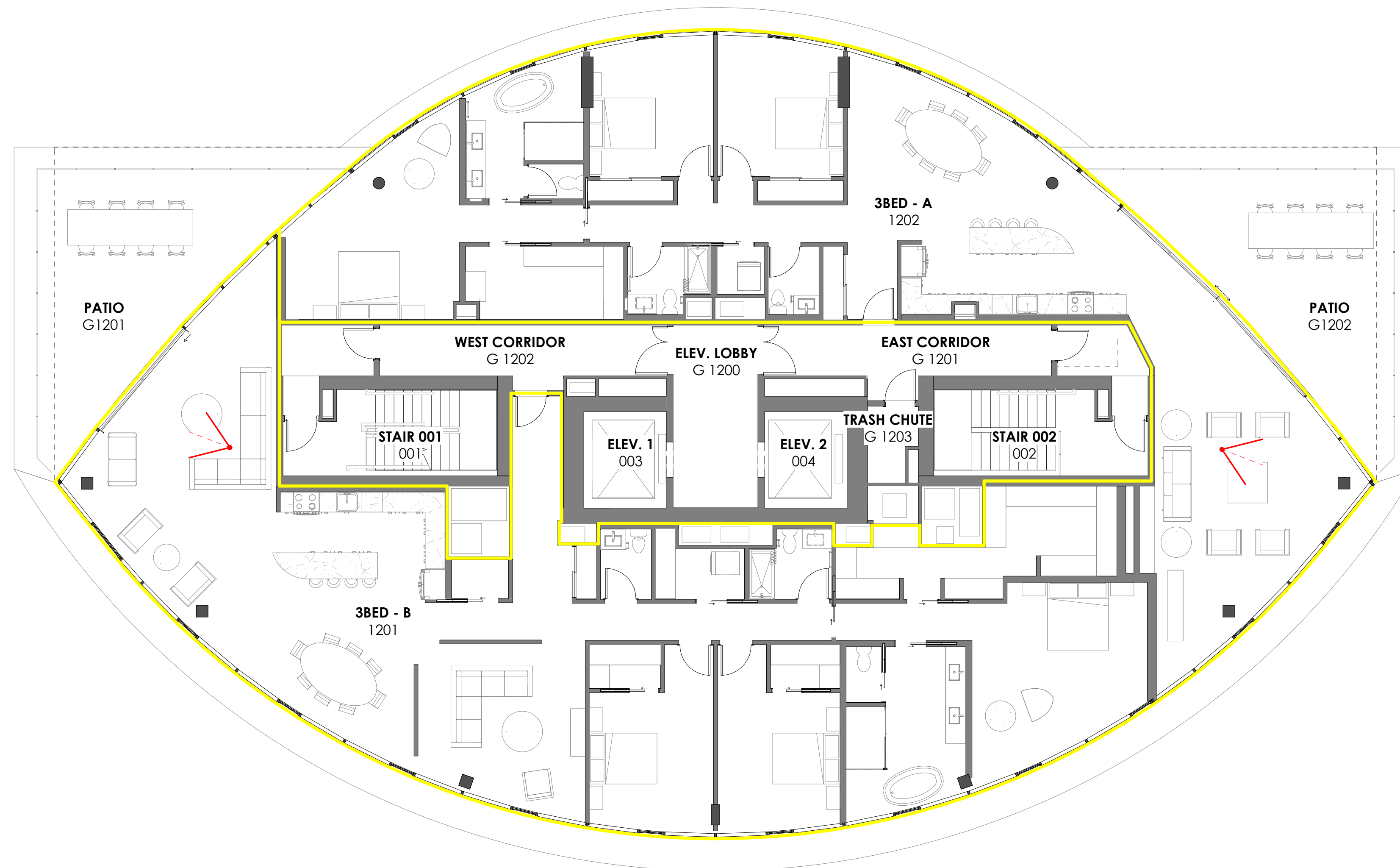
ISSUE DATE: 01 / 17 / 2022

LEGEND



OWNER / DEVELOPER:

JSD 2, LLC
PO Box 1467, Rancho Santa Fe, CA 92067
p. 858.880.7505



FLOOR PLAN - LEVEL 12
1/8" = 1'-0"



ARCHITECT:

SAFDIE RABINES ARCHITECTS
925 Fort Stockton Drive, San Diego, California 92103-1817
p. 619.297.6153 f. 619.299.6072 www.safdie.com

777 BEECH STREET

ISSUE DATE: 01 / 17 / 2022

LEGEND

 VIEW ANGLE AND DIRECTION

OWNER / DEVELOPER:

JSD 2, LLC
PO Box 1467, Rancho Santa Fe, CA 92067
p. 858.880.7505